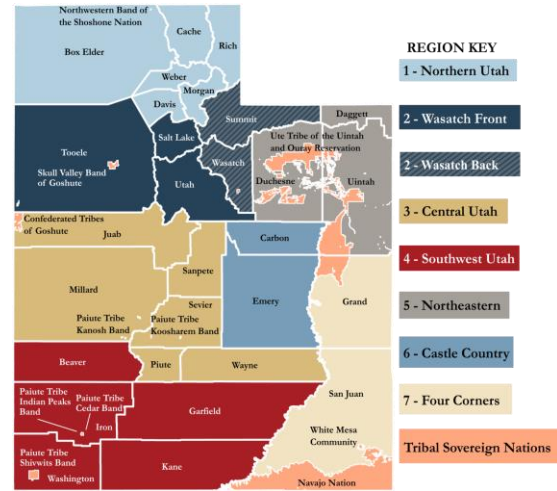




# STATE OF UTAH SITUATION REPORT

This information is from the previous 24 hours  
April 25, 2023 as of 07:00



## State Lifeline Status



[CLICK HERE](#) TO SEE A CURRENT MAP FOR INCIDENTS STATEWIDE

## Significant State Activity

**New** Red Bridge Fire (Uintah County, Uintah and Ouray Reservation) started on 4/23/23 is currently estimated at 450+ acres is 90% contained. State and federal resources are working the perimeter with support from the UTNG for water drops. [Utah Fire Info]

**Active** The State of Utah has [declared a State of Emergency](#) due to flooding, expiring 5/18/23.

## Other Immediate Concerns

- Active** Current flood risk is spring runoff, increasing streamflows, and snowmelt. Some reported flood-related landslides being monitored.

**TLP: WHITE**

Disclosure is not limited.

## Current State (SERT) Actions

- **Active** The State EOC is now at Activation Level 2-Partial Activation.
- **Active** Activated Emergency Support Functions: ESF #1, ESF #5, ESF #14, ESF #15, Logistics, VDCT, and Finance.

## Current Operational Requests

- 9 active requests are in progress regarding State sandbag resources, management of State volunteers, additional SEOC staff, other flooding response resources, and for information regarding ability to assist with flooding from USACE. 1 active requests for flooding support funding has been assigned and 1 active request is pending additional information for flooding response. [WebEOC]
- 

## Region 1

### Davis County

- **Active** Kaysville City has [declared](#) a local emergency due to significant runoff damage in the Orchard Ridge Division, expiring on 5/19/23.

### Rich County

- **New** A few small landslides on the east side of Bear Lake have been reported, but no impacts yet.

### Morgan County

- **Active** Morgan County [declared](#) a local emergency related to flooding, expiring on 5/18/23.

## Region 2

### Salt Lake County

- **Active** Draper City - Due to current hillside conditions, Ann's Trail is being closed to public use. People should be aware to stay clear of the trail due to dangerous conditions and not circumvent the closure notices. There are 2 vacant homes that are being evaluated due to a landslide, no injuries or current concerns.
- **Active** Millcreek [declared](#) a local emergency related to flooding, expiring on 5/13/23.
- **Active** Emigration Canyon [declared](#) a local emergency related to flooding, expiring on 5/12/23.
- **Active** Salt Lake County [declared](#) a local emergency related to flooding, expiring on 5/13/23.
- **Active** Salt Lake City [declared](#) a local emergency relating to flooding, expiring on 5/12/23.

## Region 3

### Juab County

- **Active** Juab County [declared](#) a local emergency related to flooding, expiring on 5/17/23.

### Millard County

- **Active** Millard County has extended their [declaration](#) for upcoming flooding to 8/31/23.

## Region 4 - reports of rising rivers and streams but are below flood stage

### Washington County

- **Active** Washington County [declared](#) a local emergency related to flooding, expiring on 5/19/23.

## Region 5

- No significant updates to report at this time.

## Region 6/7

- No significant updates to report at this time.

## Tribal Nations

- No significant updates to report at this time.

---

*Impact and activity information is provided by Local Emergency Management partners, the State Emergency Response Team (SERT), and private and non-profit partners through various coordinating communication channels. This is a developing situation, and information may quickly become outdated. Additional situation reports may be made as verified information becomes available.*

# WEATHER

## WEATHER RISK OUTLOOK

Risk levels incorporate potential impacts from weather hazards and likelihood of occurrence for a reasonable worst case scenario.

	Tue 4/25	Wed 4/26	Thu 4/27	Fri 4/28	Sat 4/29	Sun 4/30	Mon 5/1
Northern Utah and Uinta County, WY					Snowmelt	Snowmelt	Snowmelt
Central Utah					Snowmelt	Snowmelt	Snowmelt
Southern Utah				Snowmelt	Snowmelt	Snowmelt	Snowmelt

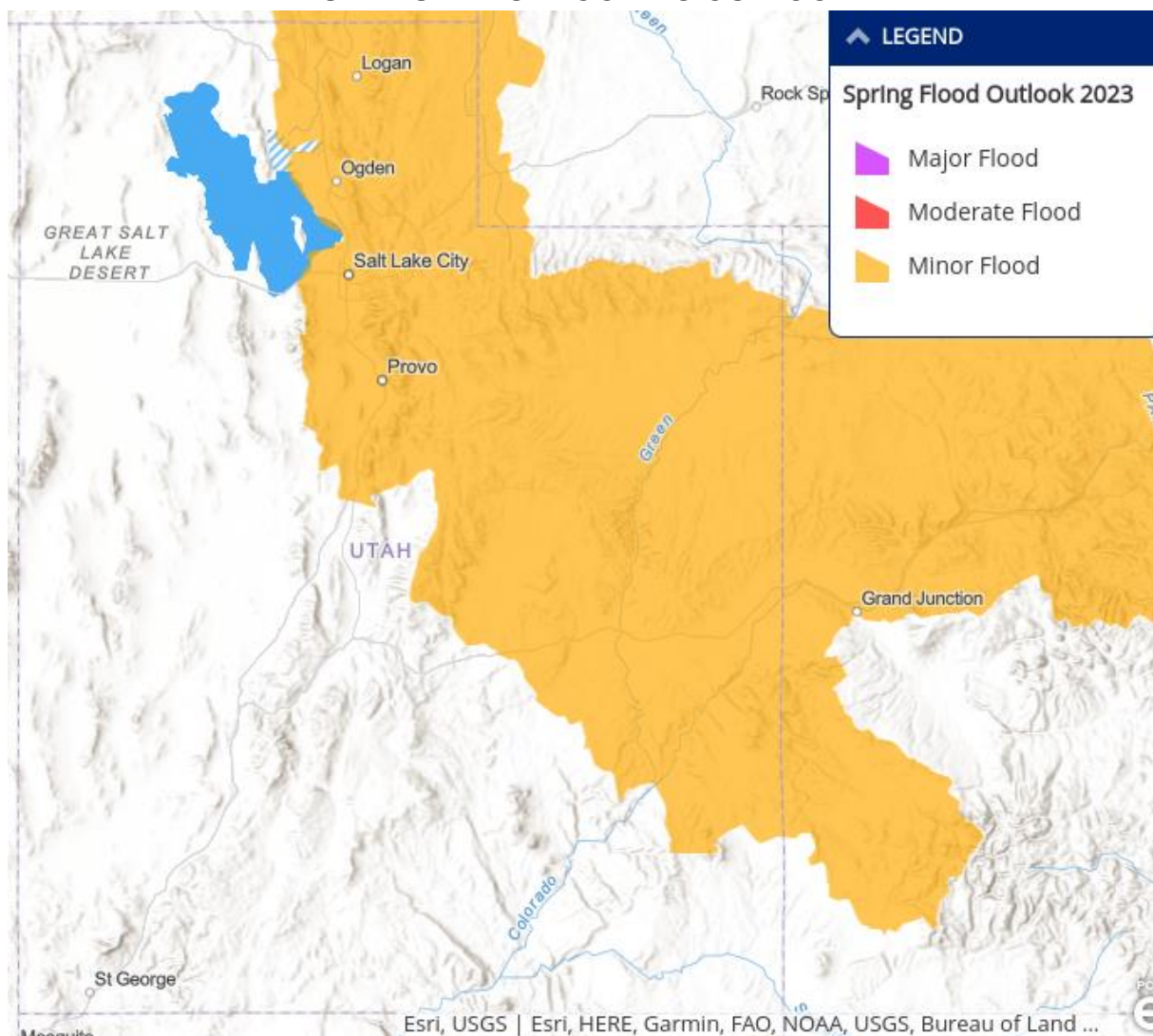


This forecast is accurate as of 4/25/23 at 0600

For a more detailed forecast, click [here](#).

- A significant warming trend will increase snowmelt and result in higher flows on area rivers and streams starting in southern Utah Friday; statewide into early next week.

## UTAH SPRING FLOODING OUTLOOK



**TLP: WHITE**

Disclosure is not limited.

Useful Links for Flooding Awareness:

[View and Download Flood Maps](#) | [NWS SLC Twitter](#) | [Reservoir Levels](#) | [Snow Water Equivalent](#) | [SNOTEL](#) | [Streamflow Gauges](#) | [Avalanche Risk](#) | [Drought Monitor](#) | [Water Dashboard](#) | [River Levels](#) | [NOAA Spring Flood Outlook](#)

---

**Utah Division of Emergency Management**

[dem.utah.gov](http://dem.utah.gov)

For questions or comments regarding this report, call 801-538-3400 or email [esf05planning@utah.gov](mailto:esf05planning@utah.gov).

## Acronyms

ESF - Emergency Support Function - <a href="#">ESF Purposes</a>	DEM - (Utah) Division of Emergency Management
ESF #1 - Transportation	DPS - (Utah) Department of Public Safety
ESF #2 - Communications	E - East
ESF #3 - Public Works and Engineering	ECC - Emergency Coordination Center
ESF #4 - Firefighting	LNO - (State to Local) Liaison
ESF #5 - Planning	NOAA - National Oceanic and Atmospheric Administration
ESF #6 - Mass Care	NWS - National Weather Service
ESF #7 - Resource Support	SEOC - State Emergency Operations Center
ESF #8 - Health and Medical	SERT - State Emergency Response Team
ESF #9 - Search and Rescue	SNOTEL - SNOpack TELelemetry
ESF #10 - Hazardous Materials	SWE - Snow Water Equivalent
ESF #11 - Agriculture, Food, Cultural Resources, and Pets	TLP - <a href="#">Traffic Light Protocol</a>
ESF #12 - Energy	UDOT - Utah Department of Transportation
ESF #13 - Law Enforcement	USACE - United States Army Corps of Engineers
ESF #14 - Disaster Recovery	USGS - United States Geological Survey
ESF #15 - Public Information	UTA - Utah Transit Authority
ESF #16 - Military Support	VDCT - Volunteer and Donations Coordination Team

**TLP: WHITE**

*Disclosure is not limited.*